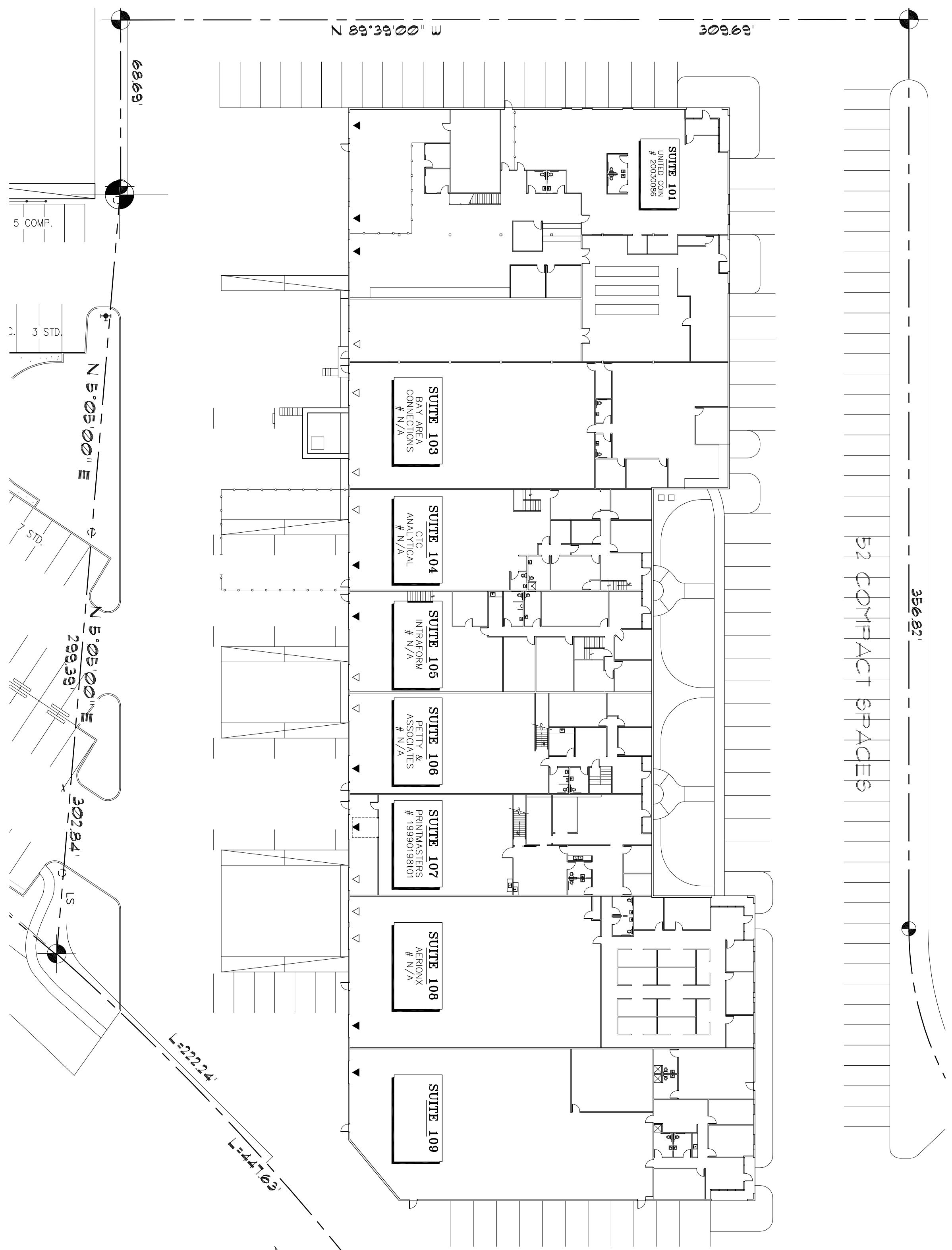
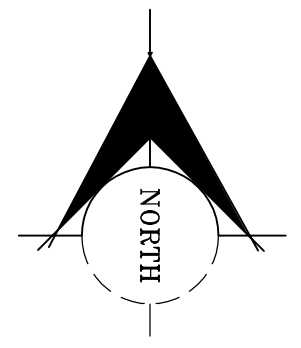


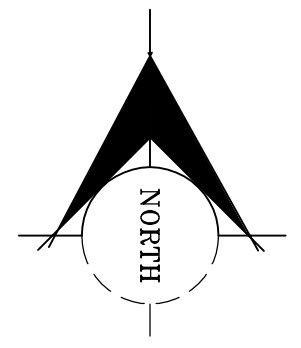
GREG PARK BUILDING B
SECOND FLOOR PLAN

SCALE: 1" = 30'-0"



GREG PARK BUILDING B
SECOND FLOOR PLAN

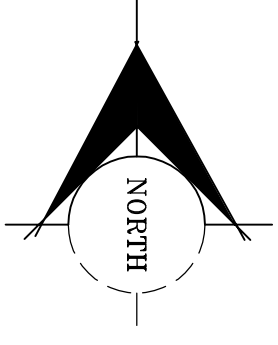
SCALE: 1" = 30'-0"



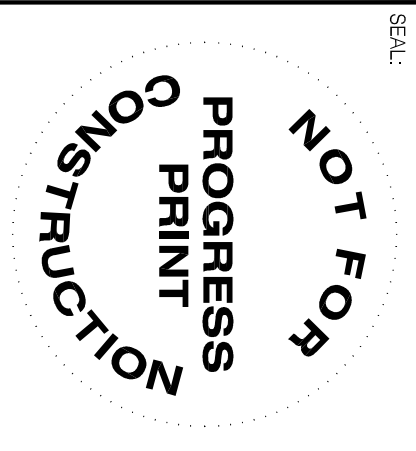
ROCK BLVD.

GREG PARK BUILDING B
FLOOR PLAN

SCALE: 1" = 30'-0"



GREG PARK BUILDING B			
1375 GREG PARKWAY			
• SUITE 101-102	OFFICE AREA = 1,130 SF	WAREHOUSE = 13,870 SF	TENANT AREA = 15,000 SF
• SUITE 103	OFFICE AREA = 825 SF	WAREHOUSE = 6,675 SF	TENANT AREA = 7,500 SF
• SUITE 104	OFFICE AREA = 1,850 SF	WAREHOUSE = 2,950 SF	TENANT AREA = 4,800 SF
• SUITE 105	OFFICE AREA = 2,680 SF	WAREHOUSE = 2,120 SF	TENANT AREA = 4,800 SF
• SUITE 106	OFFICE AREA = 1,653 SF	WAREHOUSE = 3,147 SF	TENANT AREA = 4,800 SF
• SUITE 107	OFFICE AREA = 2,220 SF	WAREHOUSE = 2,580 SF	TENANT AREA = 4,800 SF
• SUITE 108	OFFICE AREA = 3,682 SF	WAREHOUSE = 5,918 SF	TENANT AREA = 9,600 SF
• SUITE 109	OFFICE AREA = 2,423 SF	WAREHOUSE = 6,134 SF	TENANT AREA = 8,554 SF
• WORKOUT ROOM			790 SF
TOTAL BUILDING AREA =		60,674 SF	



BJG ARCHITECTURE + ENGINEERING

Blakely Johnson & Ghusn, Inc.
6995 Sierra Center Parkway, Suite 200
Reno, Nevada 89511
Phone 775.827.1010 Fax 775.827.1663
visit www.bjginc.com

GREG PARK BLDG B
1375 GREG PARKWAY, SPARKS NEVADA

PROJECT INFORMATION:

REV. NO.	DESCRIPTION	DATE

DESIGNED BY: J.A.L./J.A.L.
 CHECKED BY: J.A.L.
 PROJECT NO.: AS NOTED
 SCALE: 1/2" = 1'-0"
 DATE: 12/19/06
 SHEET TITLE: GREG PARK BLDG B FLOOR PLAN

SHEET